



PTSA Sailing Instructions for 2023



Addendum for: Protection Island Race

SCHEDULE – For 2023 this race will be run two times - Saturday **May 13** and **June 24**. The the warning signal will be at 10:00 hrs on City Dock.

RULES – As in General Sailing Instructions for PTSA Races except as amended herein. For this race there are no restrictions on crew size or flying sails.

COURSE – Cross Start line at City Dock towards the NE. Round Protection Island in either direction. Maintain a 200 yd. distance from the Wildlife Refuge. Both outbound and Inbound the Red Pt. Hudson Bell Buoy #2 is to be left to shore-ward and **the Red Nun Buoy #6 North of Pt. Wilson is to be left to seaward**. Cross the Finish line at City Dock towards the SW. Course distance is 22.1 nm.

CLASSES – All boats will start together and race with a PHRF handicap.

IDENTIFICATION – All boats, especially visitors, check in with the RC at the City Dock before the start to ensure their PHRF rating is recorded.

SHORTENED COURSE – There is no provision for shortening course. However, if conditions make it advisable to pick a closer turning point, such as the McCurdy Pt. buoy, participants should reach agreement on VHF Ch 68 well before the first boat reaches that point. Notify the RC of any course change when reporting finish time.

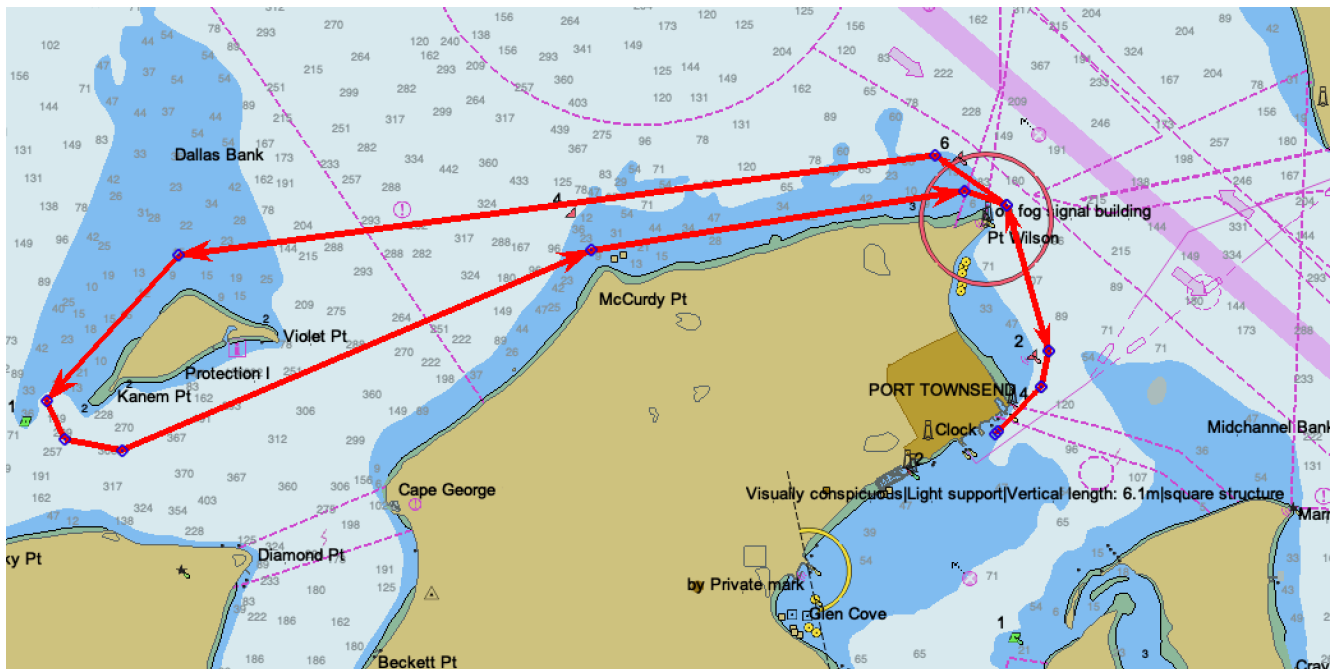
TIME LIMIT – There is no time limit.

FINISH TIMES – The finish line will be unattended. Each boat will record their own finish time, preferably to the second (use GPS or cell phone time) and note the names of the nearest boats ahead and behind them (if visible). Enter

this information as soon as possible after finishing [on the PTSA web site on the racing page](#). Please, also report RET's and DNF's.

USCG REQUESTS – All vessels must be aware of COLREGS Rule 10 (Traffic Separation Schemes) and must comply with such regardless of their competitive for the race position at the time. permit. Boats may use engine or manual propulsion to avoid conflict with vessels not racing but may not improve their position in the race. – All vessels should monitor VHF Ch 05A.

REMINDER - Stay clear of all whales - its the law!



Ignore arrows, you can round in either direction.